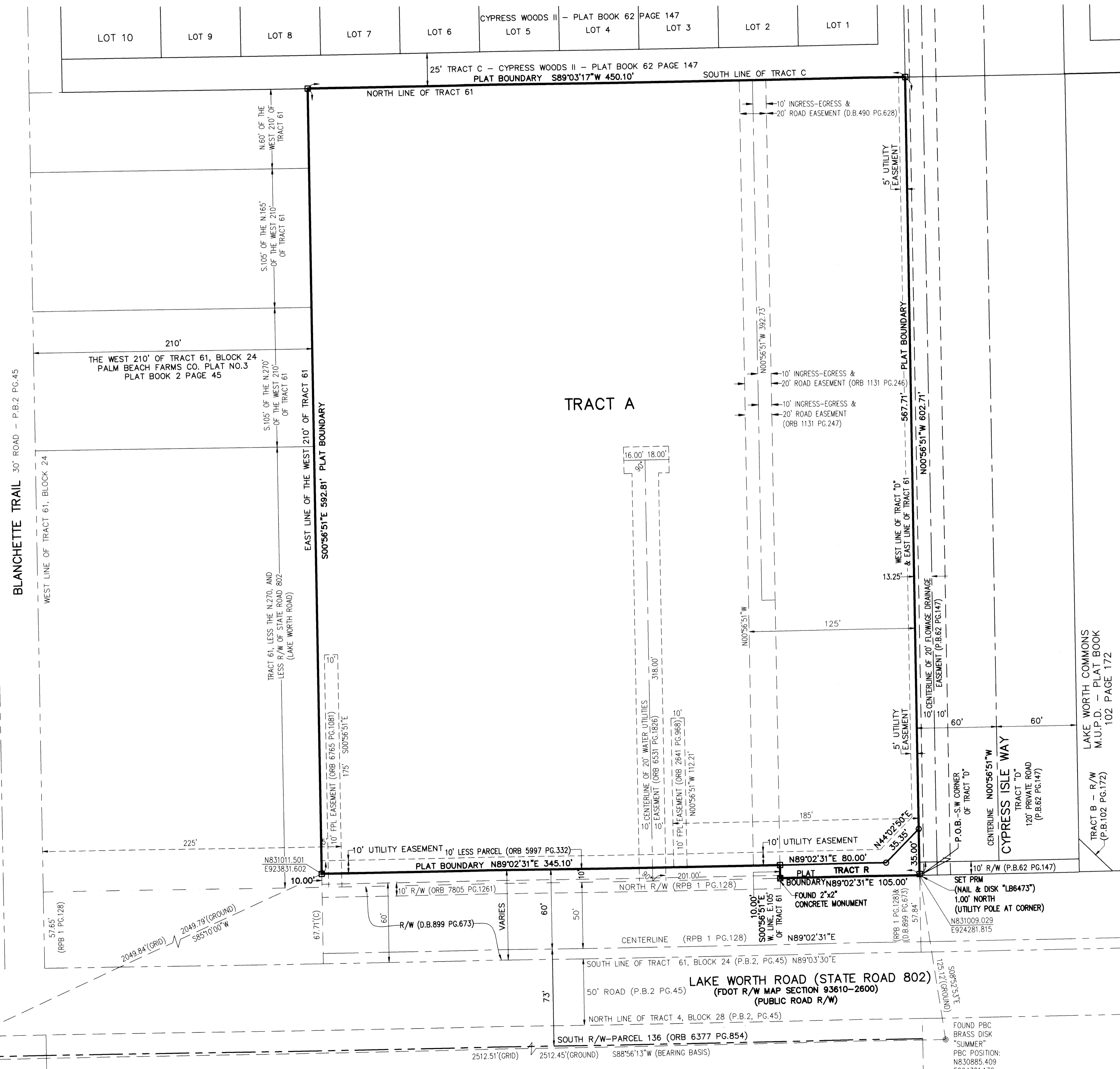


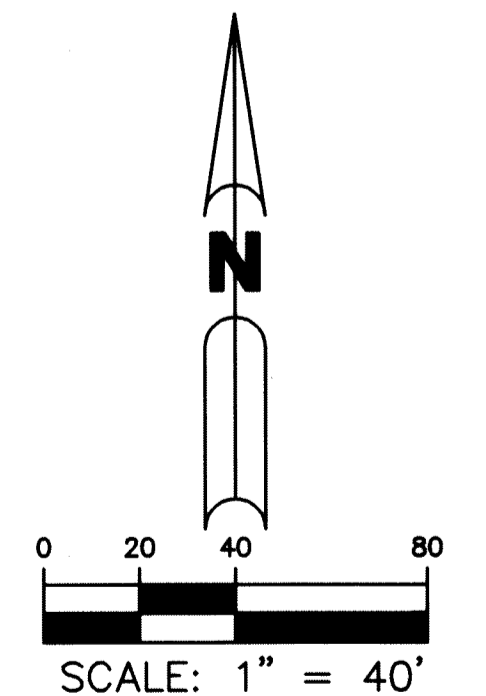
REVEAL FELLOWSHIP CHURCH

BEING A REPLAT OF A PORTION OF TRACT 61, BLOCK 24, OF PALM BEACH FARMS CO. PLAT NO.3, RECORDED IN PLAT BOOK 2 PAGE 45, OF THE PUBLIC RECORDS OF PALM BEACH COUNTY, FLORIDA, LYING IN SECTION 29, TOWNSHIP 44 SOUTH, RANGE 42 EAST, PALM BEACH COUNTY, FLORIDA
SHEET 2 OF 2

146



- LEGEND:**
- ABBREVIATIONS:**
 P.O.B. - POINT OF BEGINNING
 ORB - OFFICIAL RECORD BOOK
 D.B. - DEED BOOK
 P.B. - PLAT BOOK
 NO. - NUMBER
 PG. - PAGE
 R/W - RIGHT-OF-WAY
 SEC. - SECTION
 PBCo - PALM BEACH COUNTY
 CL - CENTERLINE
 NAD - NORTH AMERICAN DATUM
 LB - LICENSED BUSINESS
 (D) - DEED DIMENSION
 (C) - CALCULATED DIMENSION
 (G) - GROUND DIMENSION
 29/44/42 - SECTION 29, TOWNSHIP 44 SOUTH, RANGE 42 EAST
 U.E. - UTILITY EASEMENT
- SYMBOLS:**
 □ PERMANENT REFERENCE MONUMENT (P.R.M.), SET 4"x4" CONCRETE MONUMENT WITH DISK STAMPED "LB6473", UNLESS NOTED OTHERWISE
 ○ MONUMENT, SET 1/2" IRON ROD WITH "BROWN & PHILLIPS" CAP
- STATE PLANE COORDINATES:**
 A. COORDINATES SHOWN ARE GRID
 B. DATUM - NAD 83, 1990 ADJUSTMENT
 C. ZONE - FLORIDA EAST
 D. LINEAR UNIT - US SURVEY FOOT
 E. COORDINATE SYSTEM 1983/1990 STATE PLANE
 F. TRANSVERSE MERCATOR PROJECTION
 G. ALL DISTANCES ARE GROUND, UNLESS OTHERWISE NOTED
 H. SCALE FACTOR - 1.0000233
 I. GROUND DISTANCE X SCALE FACTOR=GRID DISTANCE
 J. ROTATION EQUATION: NONE



FOUND PBC BRASS DISK "CROSSING" PBC POSITION: N830838.791 E921789.053

FOUND PBC BRASS DISK "SUMMER" PBC POSITION: N830885.409 E924301.132

PREPARING SURVEYOR & MAPPER'S STATEMENT
 THIS INSTRUMENT WAS PREPARED BY
 JOHN E. PHILLIPS III, P.S.M. 4826

BROWN & PHILLIPS, INC.
 CERTIFICATE OF AUTHORIZATION # LB 6473
 1860 OLD OKEECHOBEE RD., SUITE 509
 WEST PALM BEACH, FLORIDA 33409
 561-615-3988, 615-3986 FAX